

de

de/design exchange

WINTER 2010/11 ISSUE 021 £3.80

www.demagazine.co.uk

#021: *Comics &
Architecture*



Design Miami / Art Basel Miami Beach

Architectural Drawings as *Art*

New Types of Urban Dwelling

Liverpool Design Week

HHF Architects

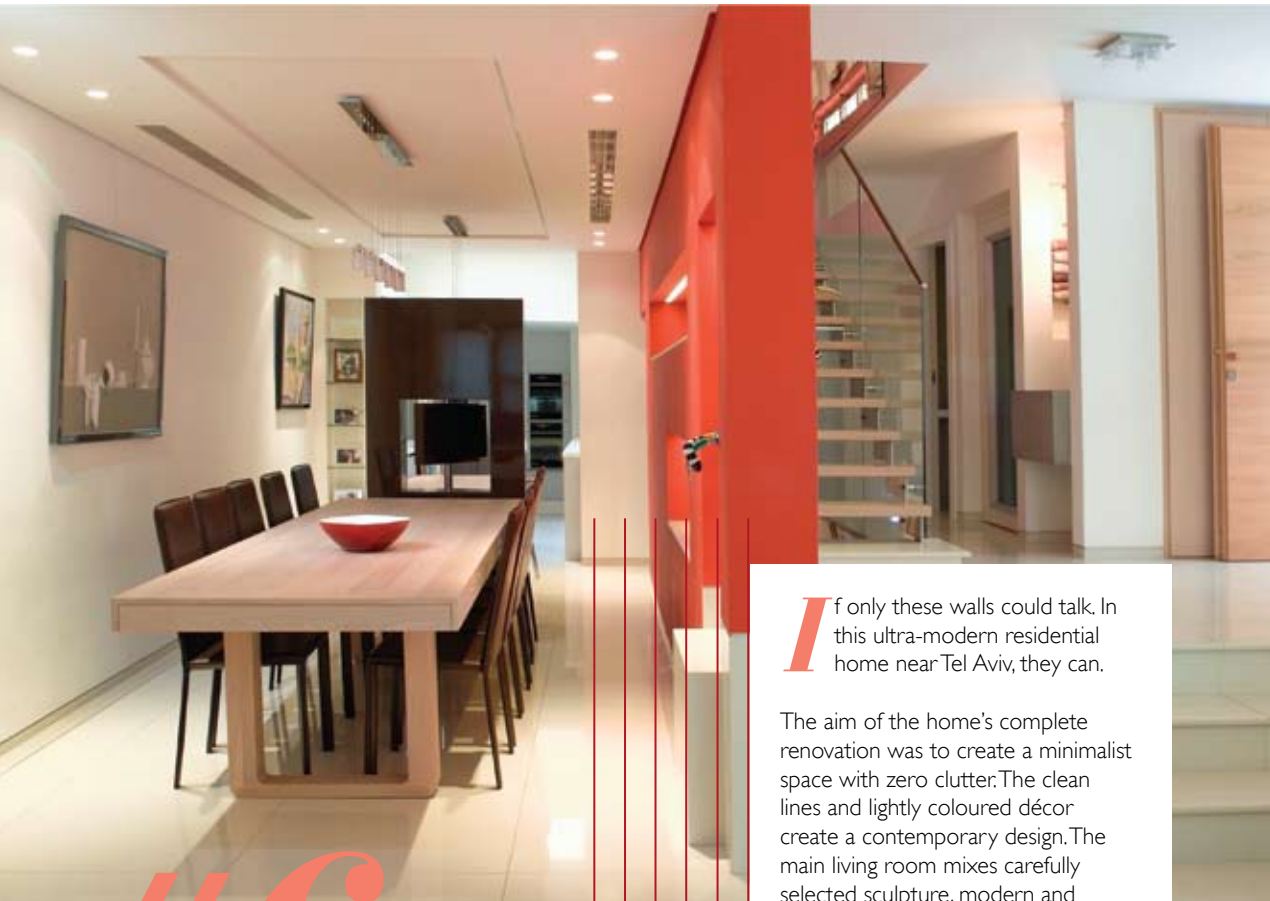
BIG Architects

RTKL



Israeli House

TEL AVIV, ISRAEL

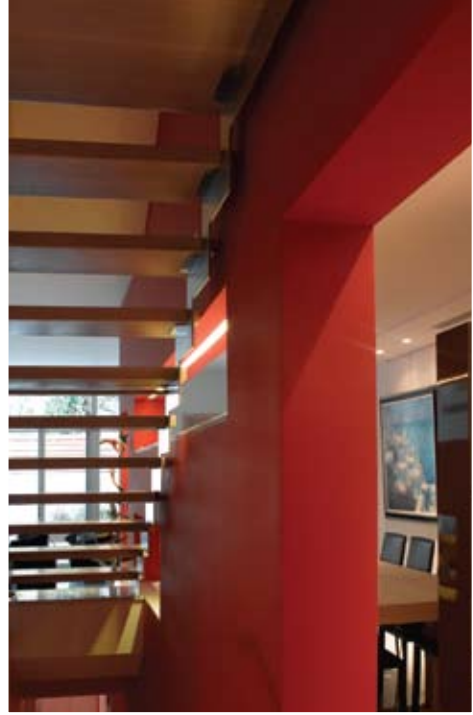


*I*f only these walls could talk. In this ultra-modern residential home near Tel Aviv, they can.

The aim of the home's complete renovation was to create a minimalist space with zero clutter: The clean lines and lightly coloured décor create a contemporary design. The main living room mixes carefully selected sculpture, modern and period furniture and a false wall hiding a plasma TV when not in use. The question was, how to incorporate unobtrusively audio equipment into such a minimal design scheme?

#6

The answer is in speakers embedded in the walls or ceilings before being plastered over, becoming invisible in the space. The speakers, by Amina Invisible Loudspeakers, generate sound by creating tiny vibrations on their surface, which in turn vibrates air molecules within the room. This creates a very dispersive sound source, which circulates throughout the room from the wall or ceiling. The benefits of the speakers in this design include a high-quality surround sound experience without sacrificing the integrity of the contemporary features of the space.



invisible loudspeakers

amina[®]
TECHNOLOGIES LTD

Amina's truly invisible loudspeaker range brings a totally new dimension to whole house entertainment systems. Simply mount into a wall or ceiling and skim over with standard finishing plaster. Once dry, apply your chosen wall covering or paint finish. The result is unparalleled sound quality, evenly distributed throughout your home, totally invisible to you and your guests.

Call or email to order your free brochure
t: +44 1480 354390
e: inspired@amina.co.uk
w: www.amina.co.uk

